

# Kildare A18.1a 199 Enlerbank Comber,

*Asking price*



**VICTORIA  
PINKERTON**

[victoriapinkerton.co.uk](http://victoriapinkerton.co.uk)

## SHOW HOME OPEN SUNDAY 2PM-4PM OR BY PRIVATE APPOINTMENT

### SITE 199 ONLY IS A NEW BUILD, COMPLETE AND READY FOR IMMEDIATE FIRST OCCUPANCY

SITE 199 ONLY IS A NEW BUILD, COMPLETE AND READY FOR IMMEDIATE FIRST OCCUPANCY

#### ABOUT YOUR NEW HOME

##### The Main Structure:

Walls are of traditional, tried and tested cavity construction. Brick and/or plaster render are used for the external finish. External timber features are painted to match where applicable. The roof will have a grey coloured, flat concrete tile crowned by a dry fixed ridge tile. uPVC round guttering with round uPVC downpipes compliment the external trim.

Energy saving uPVC gas filled double glazed windows with

locking latches (except those deemed emergency escape routes) are standard. uPVC French doors or sliding patio doors are fitted where applicable.

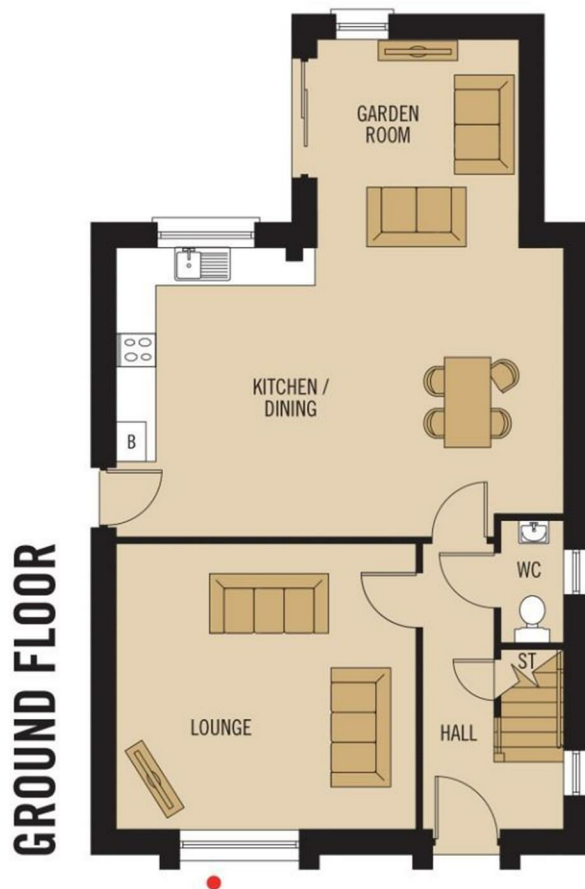
A low maintenance GRP front door and uPVC rear door with double-glazing complete the external elevation.

##### External:

All garden areas will have a front and rear lawn unless otherwise specified or shown on the site layout. To give a complete look from day one, the front lawn will be turfed. The back lawn will have either turf or seed depending on the time of the year, subject to ACC Ltd discretion. Flat top garden edge and treated rail fencing will be erected where applicable. Fencing will include a timber privacy screen between adjoining properties; all other fenced areas will

comprise of treated timber posts and rail (approx 900mm high).

Driveways will be approx 10 metres long or from the road kerb to the front elevation of the property, whichever is the greater, and finished in bitmac. Garages (where applicable) are counted as a parking space and may reduce the length of driveways. A coloured pavia brick path will be provided to at least the front and rear elevation with level access to one external door. Patios will have a minimum area of 5.75m<sup>2</sup> where applicable. Specified plots may have a boundary wall subject to planning conditions on site. You can even wash your car and water the plants using the outside tap which is provided as standard!





## SITE LAYOUT

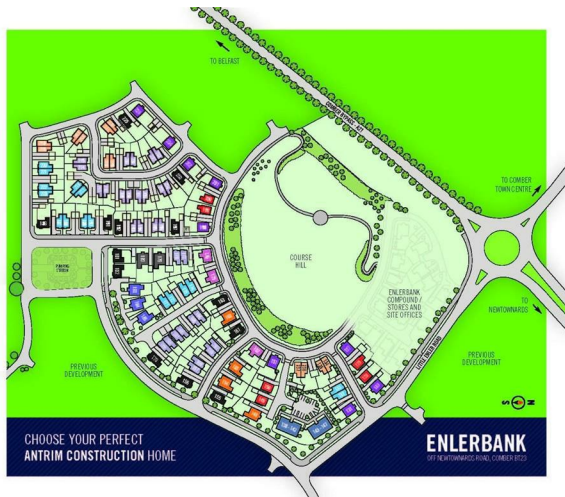
Preliminary - Not to Scale

- HOUSE TYPE KEY**
-  4 BEDROOM HOUSE
  -  3 BEDROOM HOUSE
  -  2 BEDROOM HOUSE
  -  1 BEDROOM HOUSE
  -  2 BEDROOM HOUSE
  -  3 BEDROOM HOUSE
  -  4 BEDROOM HOUSE
  -  5 BEDROOM HOUSE
  -  6 BEDROOM HOUSE
  -  7 BEDROOM HOUSE
  -  8 BEDROOM HOUSE
  -  9 BEDROOM HOUSE
  -  10 BEDROOM HOUSE
  -  11 BEDROOM HOUSE
  -  12 BEDROOM HOUSE
  -  13 BEDROOM HOUSE
  -  14 BEDROOM HOUSE
  -  15 BEDROOM HOUSE
  -  16 BEDROOM HOUSE



028 9042 8661  
ANTRIMCONSTRUCTION.NET

Plan: 20240501



CHOOSE YOUR PERFECT ANTRIM CONSTRUCTION HOME

**ENLERBANK**  
BY NEWCASTLE CONSTRUCTION GROUP

# PROPERTY FEATURES





# PROPERTY MEASUREMENTS

## Ground Floor


Lounge	14'8" x 14'1"
Kitchen/Dining	22'2" x 14'3" max
Garden Room	10'4" x 10'0"
WC	6'0" x 3'1"

## First Floor

Principal Bedroom	12'6" x 12'0"
Ensuite	8'2" x 3'9"
Bedroom 2	12'5" x 8'2"
Bedroom 3	12'6" x 9'8"
Bedroom 4	12'5" x 6'9"
Bathroom	8'8" x 6'3"

## Energy Efficiency Rating

The rating for this property is:

Energy Efficiency Rating		
	Current	Potential
Very energy efficient - lower running costs		
(92 plus) <b>A</b>		
(81-91) <b>B</b>		
(69-80) <b>C</b>		
(55-68) <b>D</b>		
(39-54) <b>E</b>		
(21-38) <b>F</b>		
(1-20) <b>G</b>		
Not energy efficient - higher running costs		
<b>England &amp; Wales</b>	EU Directive 2002/91/EC 	

\* For your information: The UK average rating is 'E50'.



WHAT3WORDS: word.word.word

**Bangor & Donaghadee**  
125 Main Street, Bangor BT20 4AE  
028 9147 9393

**Ballyholme**  
88a Groomsport Road, Bangor BT20 5NF  
028 9147 9444

**Comber & Ards**  
7a The Square, Comber BT23 5DX  
028 9140 4100

**VICTORIA PINKERTON**

[victoriapinkerton.co.uk](http://victoriapinkerton.co.uk)



These details are not part of any offer or contract. Statements in this document should not be considered factual; buyers must verify information through inspection or other means. Neither the vendor, Victoria Pinkerton, nor employees of Victoria Pinkerton are authorised to provide any representation or warranty regarding this property. Room measurements are approximate.